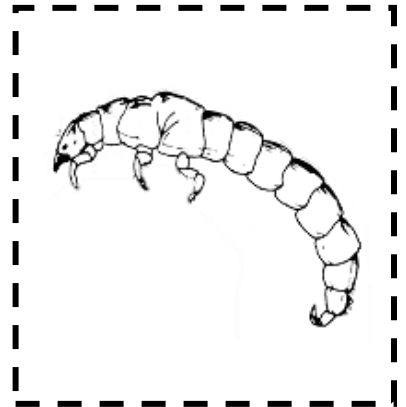
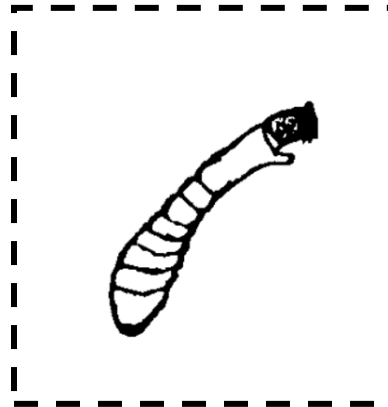
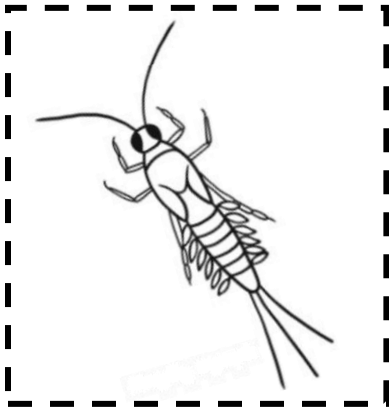
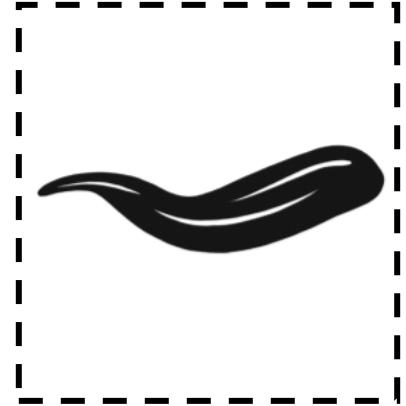
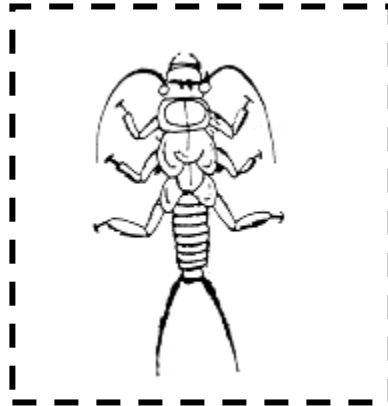
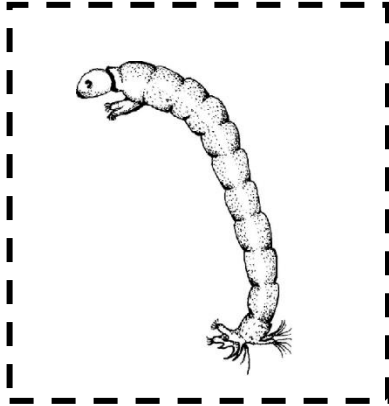
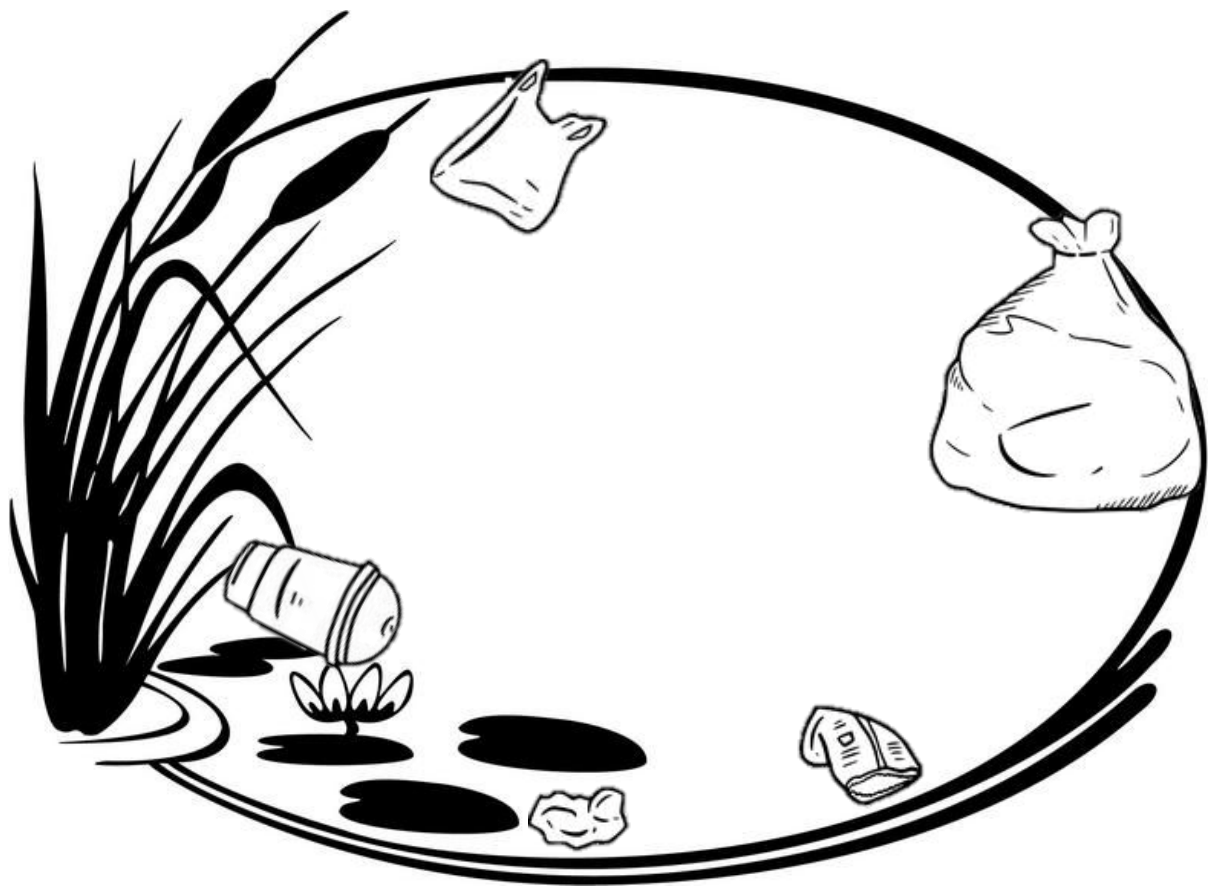


# Benthic Macroinvertebrate Water Quality Worksheet

Benthic Macroinvertebrates are insects (bugs) that live in the bottom (benthic) of lakes, rivers and creeks. They do not have backbones (invertebrate) and can be seen without a microscope (macro) and they are great indicators of water quality. Cut out the pictures and place them in the pond you would expect to find them in using the pollution tolerance guide to help you.





## Pollution tolerance guide

### Group 1: Pollution Intolerant Species



Mayfly



Riffle  
Beetle



Caddisfly  
Larva



Stonefly



Right-Handed  
Snail

### Group 2: Moderately Pollution Intolerant Species



Sowbug



Scud



Clam



Crayfish



Damselfly  
Larva

### Group 3: Pollution Tolerant Species



Aquatic  
Worm



Midge  
Larva



Leech



Black Fly  
Larva



Left-Handed  
Snail